

DOING OUR BUSINESS WE CARE FOR YOU

TROPIC-GROUP.RU

FRESH FRUIT & VEGETABLE IMPORT • LOGISTICS • RETAIL

POMELO

Origin country	Variety	Types of package	Size	Unit weight
South Africa	-	carton box	minimal diameter 130+mm	9,5 kg
China				13,5/14/15 kg

DESCRIPTION OF GOODS

- skin of yellow-orange colour typical of the variety on at least two thirds of the surface of the fruit;
- the color of flesh is from white to bright yellow or rose typical of the variety;
- minimum sugar content – 8° Brix.

CLASSIFICATION / DEFECTS

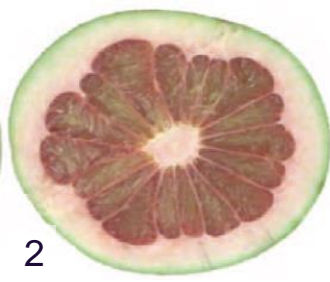
1st GRADE	2nd GRADE
<p>Pommelo of this grade must be characteristic of the variety and/or commercial type.</p> <p>The following slight defects, however, may be allowed, provided these do not affect the general appearance of the produce, the quality, the keeping quality and presentation in the package:</p> <ul style="list-style-type: none"> • a slight defect in shape; • slight defects in colouring, including slight sunburn; • slight progressive skin defects, provided they do not affect the flesh; • slight skin defects occurring during the formation of the fruit, such as silver scurfs, russets or pest damage; • slight healed defects due to a mechanical cause such as scurfs. <p>All of these skin defects together should not be on more than 1/5 of the fruit surface.</p>	<p>This grade includes pommelos that does not qualify for inclusion in the higher grades but satisfies the minimum requirements specified in the introduction.</p> <p>The following defects may be allowed:</p> <ul style="list-style-type: none"> • defect in shape; • defects in colouring, including slight sunburn; • slight oil spotting; • progressive skin defects, provided they do not affect the flesh; • skin defects occurring during the formation of the fruit, such as silver scurfs, russets or pest damage; • healed defects due to a mechanical cause such as scurfs <p>All of these skin defects together should not be on more than 1/3 of the fruit surface.</p> <p>Tolerances - no more than 10% of the shipment (1 grade)</p>
OUT OF STANDARD	WASTE
<ul style="list-style-type: none"> • rough skin, creasing; • severe defects in shape; • severe oil spotting; • severe defects of skin not qualifies for inclusion in the 2nd grade; • with slight signs of shrivelling and dehydration; • with severe mechanical damages of skin (damaged stalk etc); • contaminated, with chemical residues; • damage caused by hail (more than 3 pieces); • molded stalk; • severely deformed due to the pressure of the surrounding fruits and packs. <p>Tolerance - no more than 3% of the shipment.</p>	<p>Fruits which don't correspond to minimum requirements (Introduction) and</p> <ul style="list-style-type: none"> • damage caused by low temperature or frost, steamed; • rotten, contaminated (sowing by mold fungi spores); • sooty bloom, with pests, with remnants of pests life; • with progressive agricultural diseases; • damage caused by pests.
<p>No more than 10% of fruits which the size is less than the minimal allowed size</p>	

1st GRADE

Photo 1, 2: pomello of the 1st grade

Photo 3: pomello of the 2nd grade

Photo 4: package (bulk)



2nd GRADE DEFECTS



Photo 5: defect in shape Photo 6: slight sunburn Photo 7: slight oil spotting
Photo 8: silver and brown spots

OUT OF STANDARD

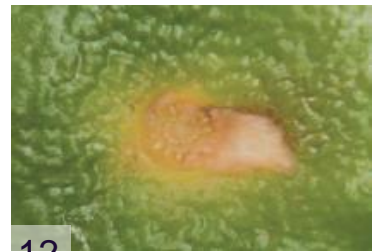
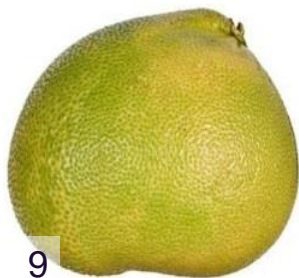


Photo 9: severe defect in shape Photo 10: severe oil spotting Photo 11: severe defects of skin Photo 12: damaged stem

WASTE



Photo 13,14,15,16: damage caused by pests