

DOING OUR BUSINESS WE CARE FOR YOU

WWW.TROPIC-GROUP.RU

FRESH FRUIT & VEGETABLE IMPORT • LOGISTICS • RETAIL

CELERY

Origin country	Variety	Type of package	Size	Unit weight
Israel	-	carton box	450+ g	12 kg

DESCRIPTION OF GOODS

- stalks and leaves are of green colour typical of variety;
- smell and taste typical for the variety, free of any foreign smell and/or taste;
- rich and firm roots.

CLASSIFICATION / DEFECTS

1st GRADE	2nd GRADE
<p>Celery stalks must be characteristic of its variety. It must be of regular shape without any signs of diseases on stalks and leaves. Stalks should not have mechanical damage. Fallen stalks aren't allowed.</p> <p>Slight defects in shape may be allowed, provided these do not affect the general appearance of the produce, the quality, the keeping quality and presentation in the package.</p>	<p>This grade includes celery that can't be included in the 1st grade but satisfy the minimum requirements specified in the Introduction.</p> <p>The following defects may be allowed, provided the fruits retain their essential characteristics as regards the quality, the keeping quality and presentation:</p> <ul style="list-style-type: none"> • slight signs of pitting; • slight defects in shape (no more than on 1/3 of length); • slight mechanical damage of stalk and leaves (bruised, fallen leaves - no more than 5% of the mass); • no more than 2 crushed and split up stalks. <p>Tolerance - no more than 10% of the shipment (1 grade)</p>
OUT OF STANDARD	WASTE
<ul style="list-style-type: none"> • mechanical damage of stalk (cracks, more than 2 cracked and crushed stalks); • contaminated cut and stalks; • deformation of the rosette on more than 1/3 of length; • signs of wilting (with darkened tips); • with roots, side shoots and flower stalks; • with cavities; • contaminated by soil; • sclerosis. <p>Tolerance - no more than 3% of the shipment.</p>	<p>Celery which don't correspond to minimum requirements (Introduction) and</p> <ul style="list-style-type: none"> • damaged by agricultural diseases, rot and mold; • frozen; • damaged by pests as well as by rodents; • wilted (discolored) stalk; • mechanical damage of stalk (crushed stalk).

No more than 10% of fruits which the size is less than the minimal allowed size

1st GRADE

Photo 1,2: celery of the 1st grade



Photo 3: packaging



2nd GRADE DEFECTS

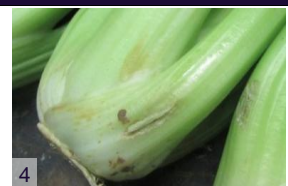


Photo 4: slight mechanical damage Photo 5: split up stalk

OUT OF STANDARD



Photo 6: more than 2 cracked stalks Photo 7: contaminated of the cut Photo 8: signs of wilting Photo 9: side shoots

WASTE

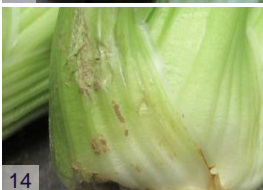
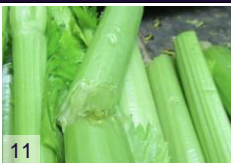


Photo 10: rotten Photo 11,12: severe mechanical damage Photo 13: wilted Photo 14: damaged by pests