

DOING OUR BUSINESS WE CARE FOR YOU

WWW.TROPIC-GROUP.RU

FRESH FRUIT & VEGETABLE IMPORT • LOGISTICS • RETAIL

**PLUM**

Origin country	Variety	Type of package	Size	Unit weight
Chili	Flavor Rich	plastic box	minimal dimeter 45+ mm	9/ 10 kg
South Africa	Songold Laetitia Larry Anne Angeleno			carton box

**DESCRIPTION OF GOODS**

- the colour of skin depend on the variety and varies from pinky red to purple blue with light blue bloom (yellow plum has yellow-greenish or yellow colour of skin with allowed slight bloom);
- The flesh is from greenish to pink colour (the flesh of yellow plum is yellow or yellow-greenish with well marked fibers);
- minimal sugar content: 10,5° Brix (yellow plum 12° Brix);
- density of the flesh: no less than 4 kg/cm<sup>2</sup>.

**CLASSIFICATION / DEFECTS**

1st GRADE	2nd GRADE
<p>Plums of this grade must be characteristic of the variety and/or commercial type. The following slight defects, however, may be allowed, provided these do not affect the general appearance of the produce, the quality, the keeping quality and presentation in the package:</p> <ul style="list-style-type: none"> <li>• slight defect in colouring;</li> <li>• slight defect in shape (presence of longitudinal groove owing to the variety is not considered as defect of shape);</li> <li>• slight defect in development;</li> <li>• slight skin defects of elongated shape (including healed cracks) must not exceed in length 1/3 of the maximum diameter of the fruit;</li> <li>• other skin defects of which the total area affected must not exceed 1/6 of whole surface.</li> </ul>	<p>This grade includes plums that can't be included in the 1st grade but satisfies the minimum requirements specified in the introduction. The following slight defects, however, may be allowed, provided they do not affect the general appearance of the produce, the quality, the keeping quality and presentation in the package:</p> <ul style="list-style-type: none"> <li>• defect in shape (presence of longitudinal groove owing to the variety is not considered as defect of shape);</li> <li>• defect in colouring;</li> <li>• defect in development;</li> <li>• skin defects of elongated shape (including healed cracks) must not exceed in length 1/4 of the maximum diameter of the fruit.</li> </ul> <p><b>Tolerance - no more than 10% of the shipment (1 grade)</b></p>
OUT OF STANDARD	WASTE
<ul style="list-style-type: none"> <li>• damaged by hail, but not malformed;</li> <li>• healed mechanical damages of skin;</li> <li>• bruises, attritions, rubbing, russeting of which the total area affected must not exceed one-quarter of the whole surface;</li> <li>• slight signs of wilting;</li> <li>• presence of foreign matters (dust, soil, moss);</li> <li>• with chemical residues;</li> <li>• gummosis;</li> <li>• soften (with penetration 4 kg/cm<sup>2</sup>);</li> <li>• internal browning;</li> <li>• severe defect in shape and development (incl. fused plums).</li> </ul> <p><b>Tolerance - no more than 3% of the shipment.</b></p>	<p>Fruits which don't correspond to minimum requirements (Introduction) and</p> <ul style="list-style-type: none"> <li>• rotten, molded, with spots of darkening of flesh;</li> <li>• unhealed damages, cracked, crashed, punctured plums;</li> <li>• green or overripened (less than 2 kg/cm<sup>2</sup>), fermented;</li> <li>• wilted, shriveled, dry plums;</li> <li>• damaged caused by pests or birds; with pests, larvae.</li> </ul>

**No more than 10% of fruits which the size is less than the minimal allowed size**

**1st GRADE**

Photo 1, 2: plum of the 1st grade

Photo 3, 4: package (bulk, layout)



**2nd GRADE DEFECTS**



Photo 5: defect in shape    Photo 6: skin defects    Photo 7: defect in colouring    Photo 8: defect in development

**OUT OF STANDARD**

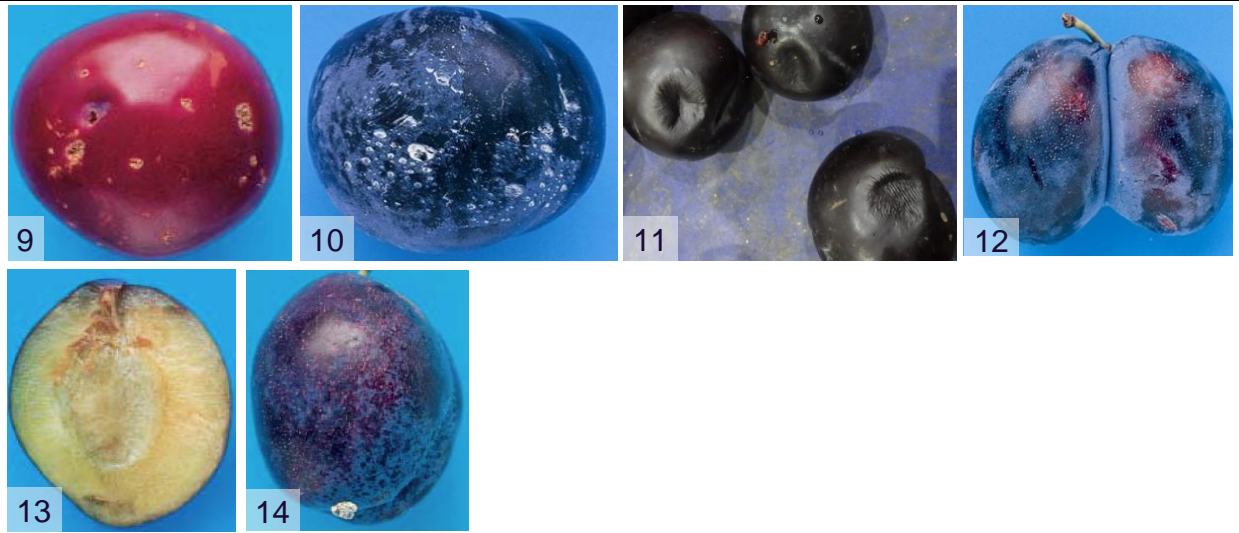


Photo 9: damaged by hail    Photo 10: chemical residues    Photo 11: bruises  
Photo 12: fused plums    Photo 13: internal browning    Photo 14: gummosis

**WASTE**

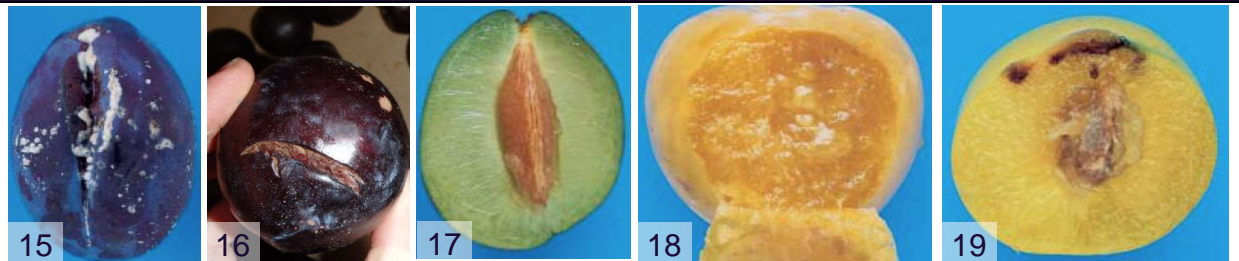


Photo 15: rotten    Photo 16: unhealed damages    Photo 17: green  
Photo 18: overripened    Photo 19: damage caused by pests