

**DOING OUR BUSINESS WE CARE FOR YOU**

**TROPIC-GROUP.RU**

FRESH FRUIT & VEGETABLE IMPORT • LOGISTICS • RETAIL

**GARLIC**

Origin country	Variety	Type of package	Size	Unit weight
China Egypt	-	bag carton box	maximal diameter 45+ mm	9/ 10 kg

**DESCRIPTION OF GOODS**

- skin of the clove is purple-brown, pink, sometimes discolored;
- flesh is white or cream color;
- dry skin;
- for scaped varieties: cutted dry scape, not exceeding 20 mm in lenght;
- for non scaped varieties: cutted dry leaves not exceeding 50 mm in lenght;
- dry, clean stem with parts of dry roots or without it.

**CLASSIFICATION / DEFECTS**

1st GRADE	2nd GRADE
<p>Garlic of this grade must be characteristic of the variety and/or commercial type. The bulbs must be: intact and of fairly regular shape. The cloves must be reasonably compact.</p> <p>The following slight defects, however, may be allowed, provided these do not affect the general appearance of the produce, the quality, the keeping quality and presentation in the package:</p> <ul style="list-style-type: none"> <li>• a slight defect in shape, colouring, structure;</li> <li>• a slight defect of unevenly set cloves;</li> <li>• a slight defect of outer skin (bruises, scuff marks and other mechanical damage not exceeding 5% of all the area of the bulb);</li> <li>• slight tears in the outer skin.</li> </ul>	<p>This grade includes garlic that can't be included in the 1st grade but satisfies the minimum requirements specified in the Introduction.</p> <p>The following defects may be allowed, provided the garlic retains its essential characteristics as regards the quality, the keeping quality and presentation:</p> <ul style="list-style-type: none"> <li>• tears in the outer skin or missing parts of the outer skin of the bulb;</li> <li>• staining on the outer skins of the bulb provided it does not cover more than half the bulb surface;</li> <li>• healed damages;</li> <li>• slight bruises;</li> <li>• defects in shape;</li> <li>• no more than three cloves, or one fifth of the total number of cloves in a bulb (whichever is lower) may be missing.</li> </ul> <p><b>Tolerance - no more than 10% of the shipment (1 grade)</b></p>
OUT OF STANDARD	WASTE
<ul style="list-style-type: none"> <li>• separated cloves;</li> <li>• bulbs free of cover skin, exposed cloves;</li> <li>• contaminated bulbs;</li> <li>• damages caused by pests, without visible signs of damages (hookworm etc);</li> <li>• dry stem is more than 20 mm (for scaped varieties), dry leaves more than 50 mm in lenght (for non scaped varieties);</li> <li>• bulbs with signs of loss of freshness.</li> </ul> <p><b>Tolerance - no more than 3% of the shipment.</b></p>	<p>Garlic which doesn't correspond to minimum requirements (Introduction) and</p> <ul style="list-style-type: none"> <li>• with severe mechanical damages, incl. crashed bulbs; more then three cloves missing;</li> <li>• sprouted bulbs;</li> <li>• rotten, damaged by frost; steamed;</li> <li>• damaged by agricultural diseases (sclerotia, bacterial withering disease), mold;</li> <li>• visible damages caused by pests (hookworm, onion fly etc).</li> </ul>
<p><b>No more than 10% of fruits which the size is less than the minimal allowed size</b></p>	

**1st GRADE**

Photo 1: garlic of the 1st grade

Photo 2,3: package (bulk, layout)



1



2



3

**2nd GRADE DEFECTS**



4



5



6



7

Photo 4: no more than three cloves missing

Photo 5: missing parts of the outer skin

Photo 6: slight bruises

Photo 7: defect in shape

**OUT OF STANDARD**



8



9



10

Photo 8: bulbs with exposed cloves

Photo 9: contaminated bulbs

Photo 10: dry stem

**WASTE**



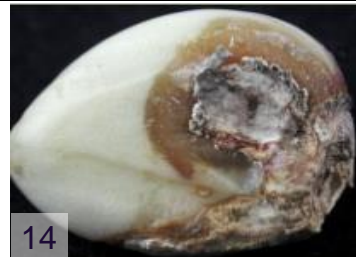
11



12



13



14



15

Photo 11: sprouted bulbs

Photo 12: mechanical damages

Photo 13: rotten

Photo 14: damaged by agricultural diseases (sclerotia)

Photo 15: damages caused by pests (onion fly)