

DOING OUR BUSINESS WE CARE FOR YOU

WWW.TROPIC-GROUP.RU

FRESH FRUIT & VEGETABLE IMPORT • LOGISTICS • RETAIL

GINGER

Origin country	Variety	Type of package	Size	Unit weight
China	-	carton box plastic box	weight 100+ g	10 kg

DESCRIPTION OF GOODS

- roots of different shape and size of bright grey colour;
- smell characteristic of ginger, spicy taste free of any foreign smell and/or taste;
- the root weight must be within 100 - 250 g.

CLASSIFICATION / DEFECTS

1st GRADE	2nd GRADE
<p>Ginger of this grade must be characteristic of the variety and/or commercial type. The root stalks must be firm, free of any signs of shrinking, shriveling and sprouting. The following slight defects, however, may be allowed, provided these do not affect the general appearance of the produce, the quality, the keeping quality and presentation in the package:</p> <ul style="list-style-type: none"> • slight skin defects such as healed scuff marks, scratches provided not exceeding 10% of the root stalk area. 	<p>This grade includes ginger that can't be included in the 1st grade but satisfies the minimum requirements specified in the Introduction. Root stalks must be firm. The following defects may be allowed, provided the ginger retains its essential characteristics as regards the quality, the keeping quality and presentation:</p> <ul style="list-style-type: none"> • skin defects such as healed scuff marks, scratches provided not exceeding 15% of the root stalk area; • early signs of sprouting (no more than 10% of the mass of product in the package); • slight damage by pests; • healed dry cracks; • less visible signs of soil; • signs of bruising. <p>Tolerance - no more than 10% of the shipment (1 grade)</p>
OUT OF STANDARD	WASTE
<ul style="list-style-type: none"> • healed mechanical damage (cracks); • with signs of wilting; • with buds; • rough fibrous root stalks with darkened heart. <p>Tolerance - no more than 3% of the shipment.</p>	<p>Ginger which doesn't correspond to minimum requirements (Introduction) and</p> <ul style="list-style-type: none"> • rotten, molded; • damaged by pests as well as by rodents; • with severe mechanical damage (crushed); • wilted, shriveled.
<p>No more than 10% of fruits which the size is less than the minimal allowed size</p>	

1st GRADE

Photo 1: ginger of the 1st grade

Photo 2: packaging



2nd GRADE DEFECTS



Photo 3: signs of bruising, scuff marks

Photo 4: early signs of sprouting

Photo 5: dry cracks

OUT OF STANDARD

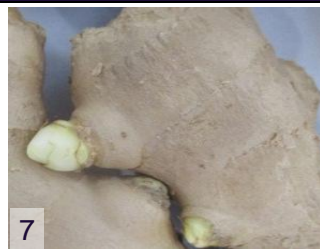


Photo 6: healed mechanical damage

Photo 7: buds

WASTE



Photo 8: molded

Photo 9: rotten

Photo 10: severe mechanical damage

Photo 11: wilted, shriveled

Photo 12: damaged by pests